

Material No:	<u>111-8391</u>	Rev:	A	Release/Change Authorization Number:	5101128	CONFIDENTIAL
Description:	PARTS LIST SCARIFIER [110:EN]			Issue Date :	09/03/2015	
HAYTER Technical Publications Assembly				Supersedes:		
				Created By :	TH	
				Scale :	None	
	<small>THIS UNPUBLISHED DOCUMENT CONTAINS HAYTER CONFIDENTIAL AND PROPRIETARY INFORMATION. IT MAY NOT BE WHOLLY OR PARTIALLY COPIED, DISCLOSED TO OTHERS, OR USED FOR ANY PURPOSE WITHOUT WRITTEN PERMISSION FROM HAYTER. IF PUBLICATION OCCURS, THE FOLLOWING NOTICE APPLIES: "HAYTER ALL RIGHTS RESERVED".</small>					
Reason for Revision:	RELEASE TO PRODUCTION					

Comments

COVER PAGE FOR PARTS LIST SCARIFIER [110:EN]



HAYTER

MAKERS OF THE FINEST MOWERS

Hayter Ltd. Spellbrook, Bishop's Stortford, Herts, England. CM23 4BU
Tel: +44 (0)1279 723444 Fax: +44 (0)1279 723821

Scarifier-Spare parts list

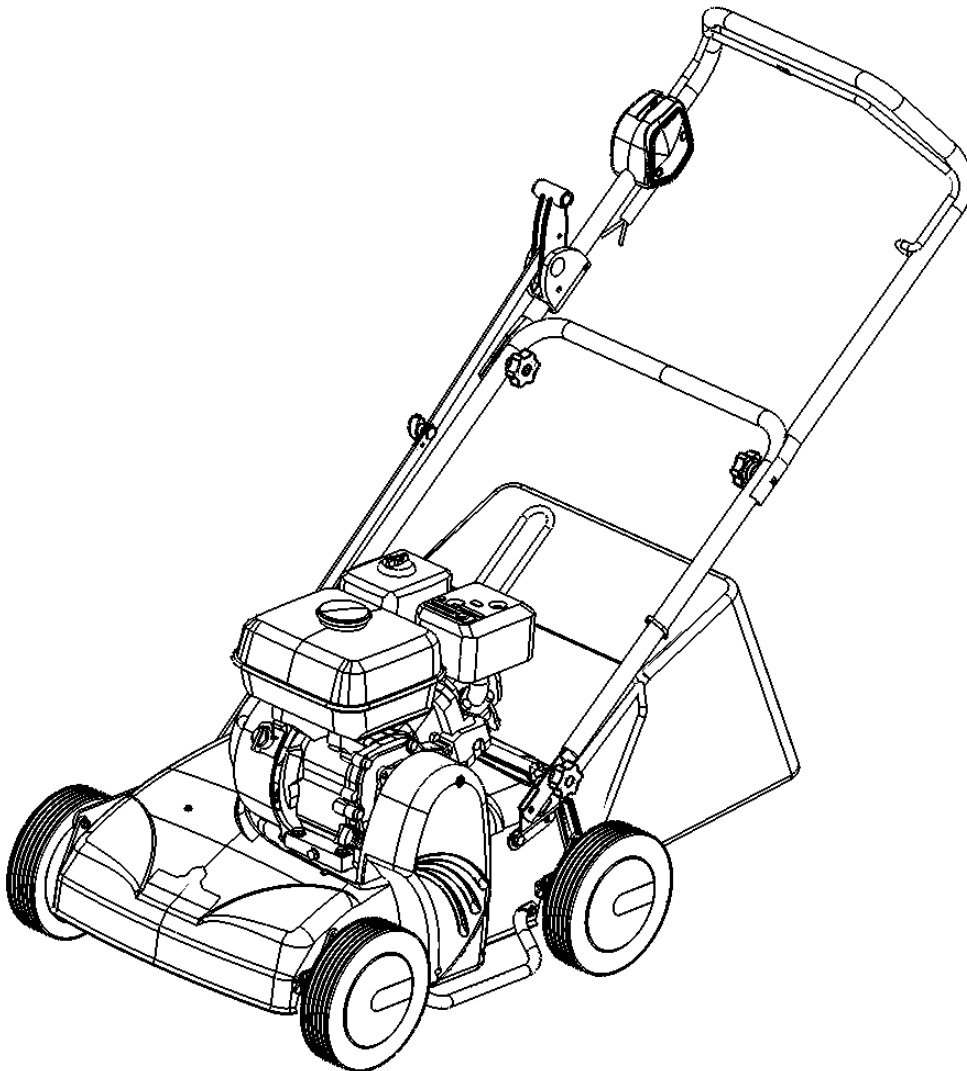
Original Version: EN

Issue:05/02/15

Codes: 110J

From serial: 315000001 and up

Form No.111-8391 A

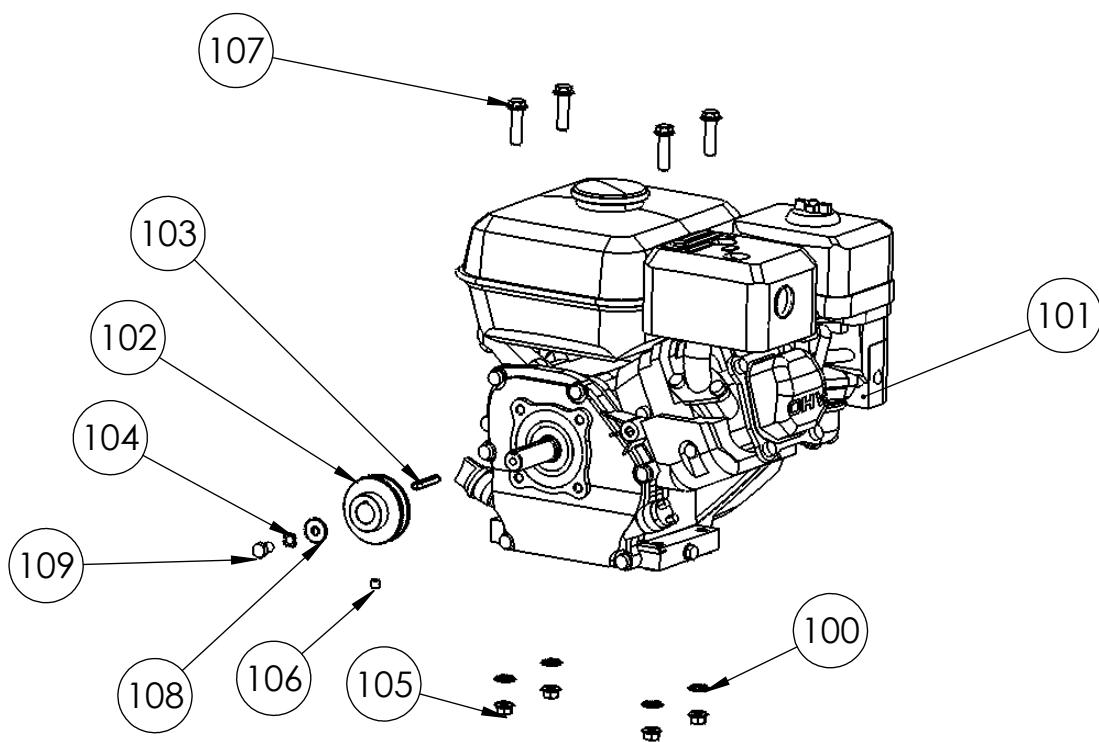
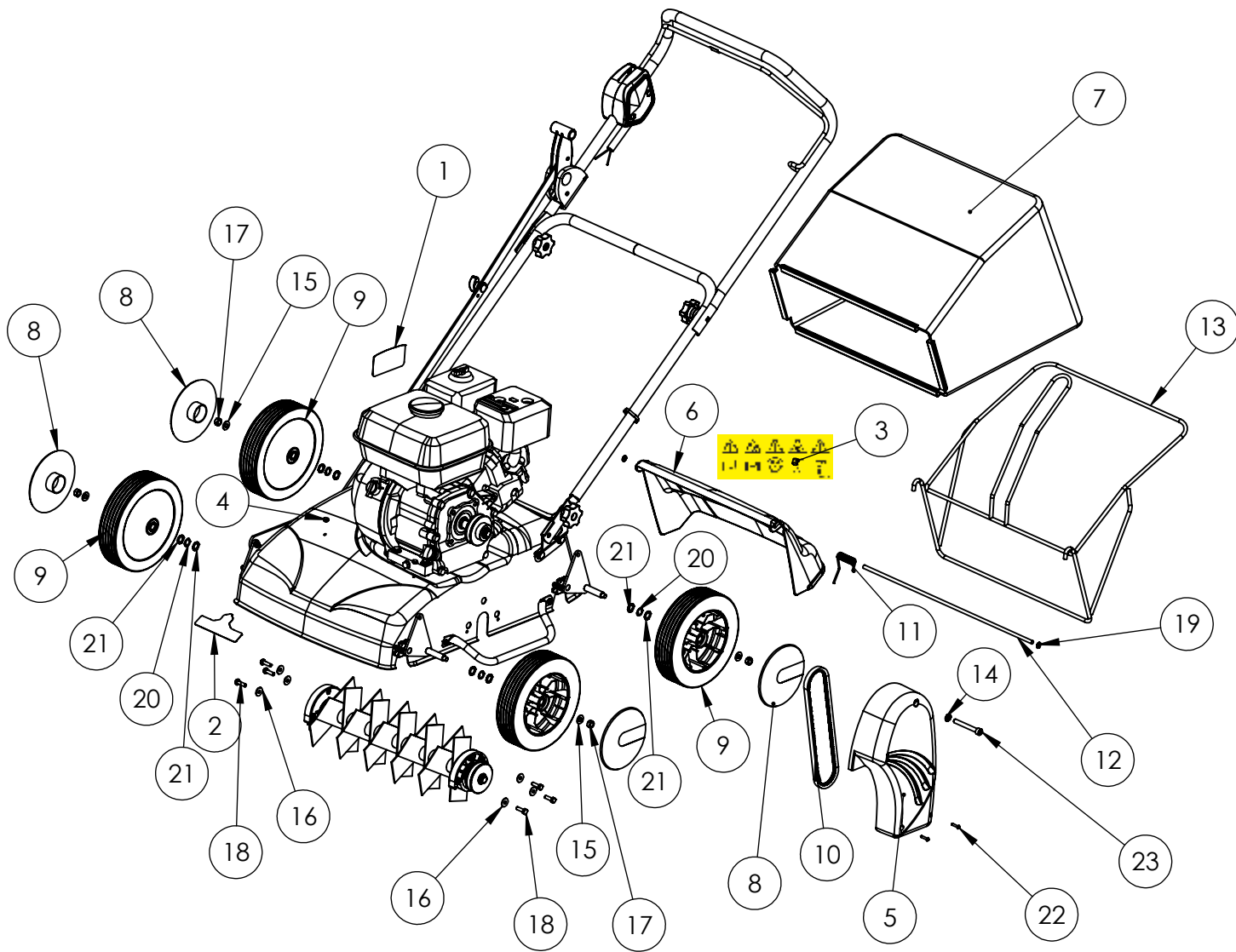


Register at www.Hayter.co.uk

CE

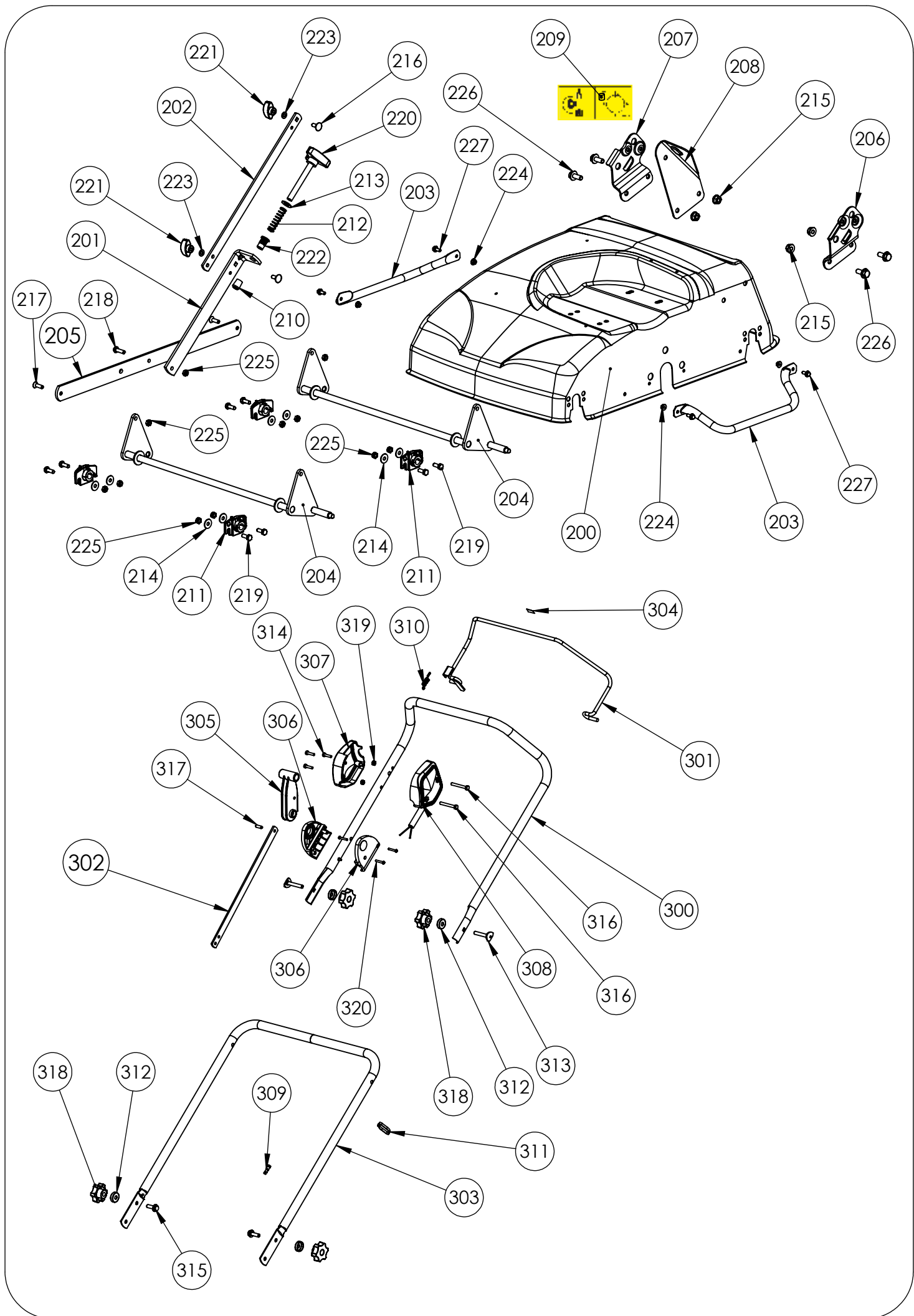
K501080020_A

02/03/2015

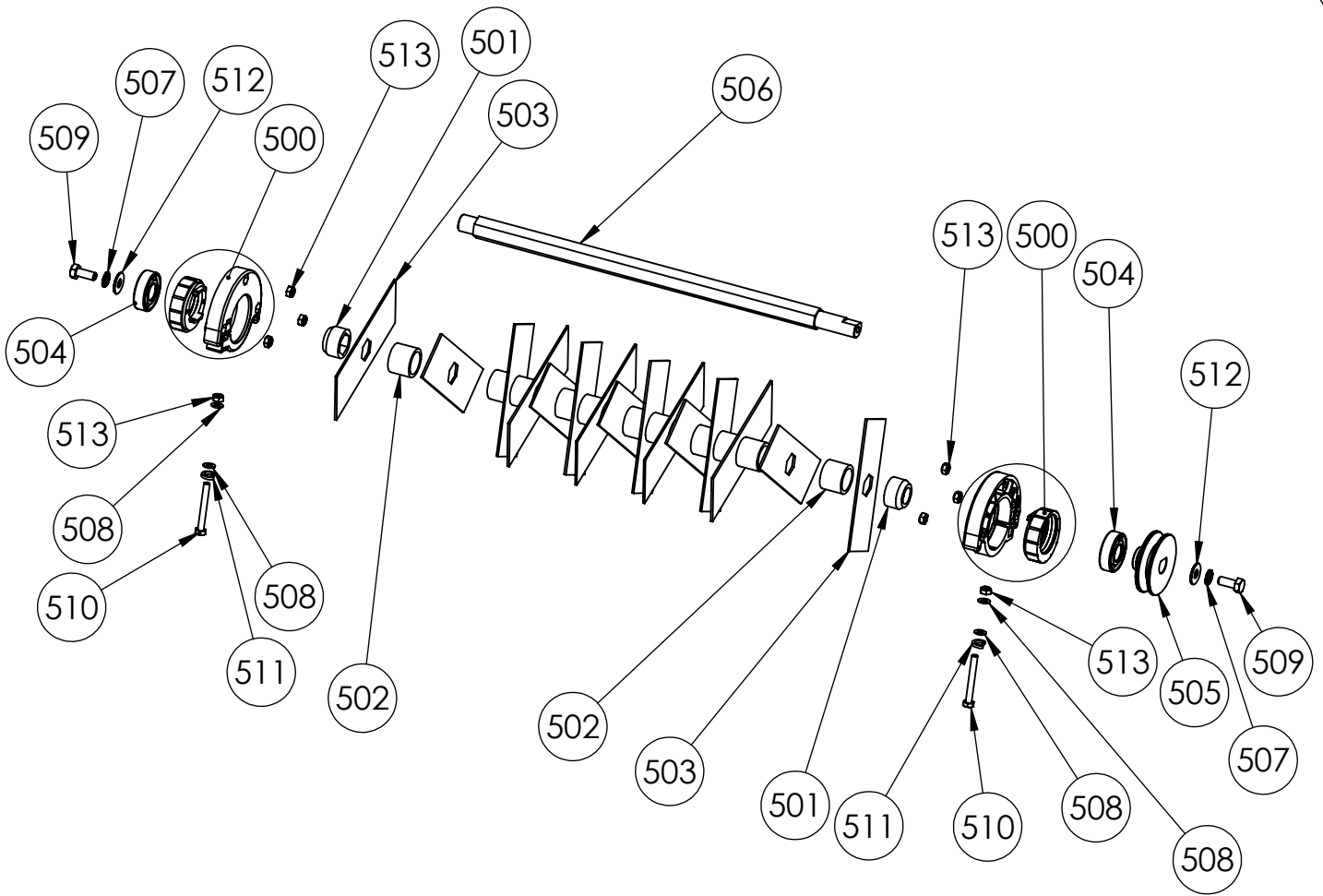


Item No	Part No.	Description	QTY
1	111-7507	DECAL ENGINE	1
2	410087	DECAL HAYTER LOGO	1
3	111-7531	SAFETY STICKER	1
4	111-7515	CAP Ø8	3
5	111-4623	BELT COVER	1
6	111-4629	FLAP SCARIF 38	1
7	111-4649	GRASS BAG	1
8	111-7519	WHEEL COVER-GREY -RAL 7024	4
9	111-7518	WHEEL Ø 200	4
10	111-4600	BELT XPZ0637	1
11	111-4630	SPRING FOR BACK SHUTTER	1
12	111-4627	AXLE FOR BACK SHUTTER	1
13	111-4635	FRAME	1
14	111-4643	WASHER AZ 8	1
15	111-4620	WASHER 18 X 8 X 1.5	4
16	111-4592	WASHER 18 X 6.25 X 1.2 ZN	6
17	111-4621	NUT HU M8	4
18	111-4591	SCREW TH 6 x 20	6
19	111-4628	CLAW WASHER Ø7	2
20	111-7573	WASHER WAVY	4
21	09280	SHIM 12X18X1	8
22	111-4593	SCREW 3.9 x 19	2
23	111-4624	SCREW UNF CHC 5/16 x 2"1/2	1

Item No	Part No.	Description	QTY
100	111-7642	WASHER MOTOR	4
101	111-7574	BS 550 SERIES *	1
102	111-8454	PULLEY	1
103	111-4594	KEY 4.76 X 4.76 X 37	1
104	111-4643	WASHER AZ 8	1
105	09741	NUT H M8 NOTCHED SHOULDER	4
106	111-4595	SCREW STHC 6 X 8	1
107	111-7643	SCREW HM 8x35 notched shoulder	4
108	111-4601	FENDER WASHER 8x22x1.5 ZN	1
109	111-4598	SCREW UNF 5/16 x 5/8"	1



Item No	Part No.	Description	QTY
200	111-8370	GREEN DECK	1
201	111-8373	BLACK LOWER LIFTING BAR	1
202	111-8388	BLACK MIDDLE LIFTING BAR	1
203	111-7526	BLACK SIDE PROTECTION	2
204	111-4617	BLACK AXLE	2
205	111-8372	BLACK LIFTING AXLE BAR	1
206	111-4631	BLACK LEFT HANDLEBAR SUPPORT	1
207	111-4632	BLACK RIGHT HANDLEBAR SUPPORT	1
208	111-8371	BLACK STOP HEIGHT ADJUSTMENT	1
209	111-8387	HEIGHT SETTING STICKER	1
210	111-8377	PLASTIC CAP	1
211	111-4616	BEARING AXLE	4
212	111-8375	HEIGHT ADJUST SPRING	1
213	33095-00	PLATE WASHER 10 x 20 x 2	1
214	111-4592	WASHER 18 X 6.25 X 1.2 ZN	8
215	09741	NUT H M8 NOTCHED SHOULDER	4
216	111-8384	SCREW TRCC 6 x 16	2
217	111-4646	SCREW TF HC M6 x 20 10.9	2
218	111-4591	SCREW TH 6 x 20	1
219	111-4615	SCREW HM 6 x 16	8
220	111-8374	HEIGHT LEVEL ADJUSTMENT M10	1
221	111-8385	KNOB M6	2
222	111-8376	INSERT M10	1
223	111-8386	TOOTH LOCKWASHER 6Z	2
224	111-7647	NUT H M5 Z NOTCHED SHOULDER	4
225	111-4597	BLOCKING NUT M 6 Z	11
226	100.021.963	SCREW H M8X20 Z	4
227	111-7646	SCREW H NOTCHED SHOULDER 5x12	4
Item No	Part No.	Description	QTY
300	111-8378	BLACK UPPER HANDLE	1
301	H290239	SWITCH CONTROL LEVER	1
302	111-8379	BLACK SUPERIOR LIFTING BAR	1
303	111-8389	BLACK LOWER HANDLE	1
304	H295159	DECAL STOP	1
305	111-8381	HANDLE LIFT HEIGHT	1
306	111-8380	LEVEL SUPPORT	2
307	111-1816	LEFT SWITCH BOX	1
308	111-2054	RIGHT SWITCH BOX + CABLE	1
309	111-0308	RED FEMALE TERMINAL	1
310	111-1773	SWITCH SPRING	1
311	HY3966	TIE-CABLE	3
312	111-4638	RING WHEEL HANDLEBAR	4
313	111-7644	SCREW TP PLI22 M8 X 50/27 ZN	2
314	09765	PLASTIC SCREW M5 x 22	3
315	111-7645	SCREW H NOTCHED SHOULDER 8 X 25	2
316	ZDH1F050U	SCREW TH 6 x 50	2
317	111-8382	COTTER PIN 6 x 18	1
318	111-4637	HANDLE WITH NUT M8	4
319	111-4597	BLOCKING NUT M 6 Z	2
320	111-0100	SCREW TBC PLASTIC 4 x 25	4



Item No	Part No.	Description	QTY
500	111-7513	BUSHING + BEARING HOUSING	2
501	111-4602	HEXAGONAL ROTOR SPACER	2
502	111-4605	SPACER ROTOR	14
503	111-4604	KNIVES	15
504	111-4590	BEARING 6203 2 RS	2
505	111-4599	PULLEY	1
506	111-4603	ROTOR AXLE	1
507	111-4643	WASHER AZ 8	2
508	111-4607	WASHER 6 x 12 x 1.2 ZN	4
509	111-4626	SCREW HM 8 x 20	2
510	ZDH1F050U	SCREW TH 6 x 50	2
511	09474	Washer Grower M6	2
512	111-4601	FENDER WASHER 8x22x1.5 ZN	2
513	111-4597	BLOCKING NUT M 6 Z	8