

Harrier - Parts List

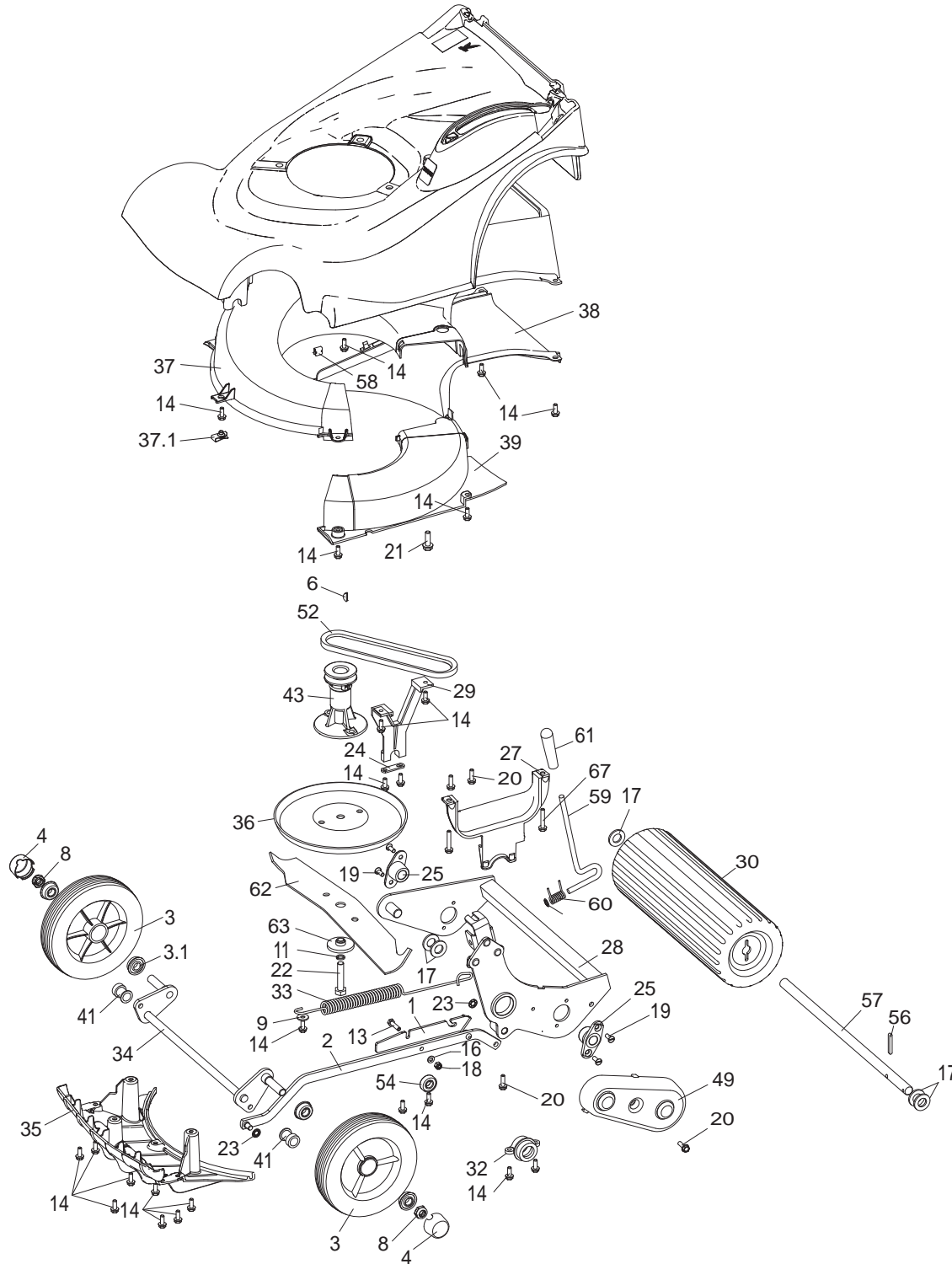
Original Version: EN

Issue : 01.10.13

Codes: 410H

From Serial: 314000001 and up

Lower Mainframe

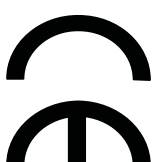


Item No	Description	Part No.	QTY	Notes	Item No	Description	Part No.	QTY	Notes
1	SPRING MOUNT	111-0073	1		30	ROLLER HARRIER 41	410044	1	
2	CONNECTING ROD WA	111-1050	1		32	HOUSING - PIVOT BEARING LH	410048	1	
3	WHEEL 180X45 RIBBED	111-1250	2		33	SPRING COUNTER BALANCE	410050	1	
3.1	BEARING	111-1252	4	2 PER WHEEL	34	AXLE FRONT W/A - H41	410051	1	
4	HUB CAP	111-1251	2		35	FINS	410055	1	
6	KEY WOODRUFF N DEG 505	1662	1		36	FRICITION DISC	410057W	1	
8	NUT UNF 1/2"NYLOC EXT THIN5/16	HY4486	2		37	CHUTE	410058	1	
9	WASHER 1/4*3/4 GALV ROOFING	09262	1		37.1	LUG	410076	1	
11	WASHER SPRING 3/8 SC	09273	1		38	THROWPLATE	410059	1	
12	GRIP FIX EXT 5/16"	04020	1		39	UNDERDECK COVER	410060	1	
13	SETSCREW M6*25	09364	1		41	BEARING FRONT AXLE	410069	2	
14	SCREW TAPTITE M6*16	09365	22		43	CARRIER BLADE BOSS - DIE CAST	410078	1	
16	WASHER PLAIN M6*12*1.6	09472	1		45.1	GEARBOX PIN	411023	1	
17	WASHER M16 PLAIN	09491	5		45.2	GEARBOX PULLEY	111-1941	1	
18	NUT M6 NYLOC 'P' TYPE GD 8	09544	1		49	COVER DRIVE	411013	1	
19	SCREW TAPTITE M6*16 C/SK POZI	09545	4		56	KEY 3/16"*3/16"*1 1/2" 2R END	411037	1	
20	SCREW TAPTITE M6*20 WASHER	09575	1		57	SHAFT ROLLER	411038	1	
22	BOLT UNF 3/8*3.1/4	09788	1		58	FASTENER PANEL EDGE	410082	1	
23	WASHER STARLOCK 5/16"	0201086	2		59	LEVER HOC	480128	1	
24	PLATE SECURING	219037	1		60	SPRING TORSION HOC GALVANISED	480132	1	
25	HOUSING BEARING ROLLER	219102	2		61	KNOB HOC	480134	1	
27	BRACKET - PIVOT LH	HY410002	1		62	CUTTERBAR 16"	HY201026	1	
28	FRAME REAR ROLLER W/A	410011W	1		63	DISTANCE PIECE CUTTERBAR	HY4014	1	
29	BRACKET- ROLLER FRAME PIVOT RH	410016	1		67	SCREW TAPTITE M6*35 HEX W.HD	09786	2	

Harrier 41 - Declaration Of Conformity

EC DECLARATION OF CONFORMITY

Manufactured by: HAYTER LIMITED,
Address: Spellbrook, Bishop's Stortford, Herts. CM23 4BU. ENGLAND
declare that the lawnmower :



Model name: **Harrier 41**
Push
Type: Pedestrian rotary
Model No: CODE 410
Cutting width: 41 cm
Speed of rotation of the cutting device: 2750 rpm
Engine manufacturer: Briggs and Stratton
Speed of rotation of engine: 2750 rpm
Serial No. Range: 314000001 and up

Complies with the provisions of Directive: 2006/42/EC Essential Health & Safety Requirements Relating to the Design & Construction of Machinery and Safety Components and the regulations transposed into national law.

Also Directive 2004/108/EEC Electromagnetic Compatibility and the regulations transposed into national law.

Also Directive 2000/14/EC Noise emission in the environment by equipment for use outdoors, as amended and the regulations transposed into national law.

Procedure applied for the conformity assessment: ANNEX VI, procedure 1.

Notified Body: Sound Research Laboratories Ltd, Holbrook House, Little Waldingfield, Sudbury, Suffolk. CO10 0TH. ENGLAND

Notified body identification No: 1088

Measured sound power level: 94 dB(A)
Guaranteed sound power level: 96 dB(A)

Signed

Date: 18.09.13
Declaration done and technical documentation kept at:
HAYTER LIMITED
Spellbrook, Bishop's Stortford,
Herts. CM23 4BU ENGLAND

VIBRATION INFORMATION

Hand / Arm Vibration Level at the Operator Position measured in accordance with European Standard EN 836:

410

Measured Vibration Level $a_{hv} = 5 \text{ ms}^{-2}$
Uncertainty of measurement $K = 1.5 \text{ ms}^{-2}$

SOUND PRESSURE INFORMATION

Sound Pressure Level at the Operator Position measured in accordance with European Standard EN 836:

Measured Sound Pressure Level LPA = 83 dB(A)
Uncertainty of measurement $K = 2 \text{ dB(A)}$

Serial No.

Upper Mainframe

Item No	Description	Part No.	QTY
1	ENGINE B&S SERIES 650 XVB COVER	111-6624	1
2	UPPER HANDLEBAR	305145W	1
3	CABLE ENGINE BRAKE V/S	111-1094	1
6	DECAL ENGINE HARRIER 41 (RS)	111-6652	1
8	SCREW TAPTITE UNC 3/8**1 1/4"	09349	3
9	SCREW TAPTITE M6*16	09365	5
10	BOLT COACH M8*40 GRADE 8.8	09379	2
11	NUT M6 NYLOC 'T' TYPE	09438	2
12	NUT M8 NYL INSERT T TYPE	09441	2
13	WASHER PLAIN M6*12*1.6	09472	1
14	NUT M6 NYLOC 'P' TYPE GD 8	09544	3
15	SCREW TAPTITE M6*20 WASHER	09575	2
16	SCREW DIA 6*20 PT PAN FLANGE	09687	2
17	WASHER NYLON 19*11*1.6	09688	6
20	BOLT HANDLEBAR M8*45	HY226024	2
21	CAP FOR M8 NUT BLACK	HY234051	2
22	PLUG TUBE 7/8**16g EP620/GL22	300160	2
23	GUIDE ROPE	305093	1
24	DEFLECTOR PIN 6.35*295	305103	1
26	LABEL HEIGHT OF CUT	320006	1
27	LEVER ENGINE	340179	1
28	PIN PIVOT	340182	2
29	RATCHET HOC	HY410006	1
30	DEFLECTOR REAR	410028	1
31	SPRING DEFLECTOR	410030	1
32	WHEEL COVER LH	410032	1
33	WHEEL COVER RH	410033	1
34	NUT CAP PLASTIC M6	343025	2
36	GUIDE CABLE	410037	2
37	FRAME GRASSBAG	410038W	1
38	FABRIC GRASSBAG	410039	1
39	DECAL GRASS BLADE	410064	1
40	BOX BATTERY	410080	1
41	LID BATTERY BOX	410081	1
42	DECAL-HAYTER (LOGO (03))	410087	1
44	KNOB M8 HANDLEBAR	480088	2
45	MAINFRAME	410010V	1
46	HANDLEBAR LOWER	410034W	2
52	FASTENER DRIVE	300144	4
53	FASTENER DRIVE 6.5	341033	2
54	BOLT M6*40	ZBH1F040U	1
57	DEAL- MADE IN BRITAIN	111-6625	1

