



HAYTER

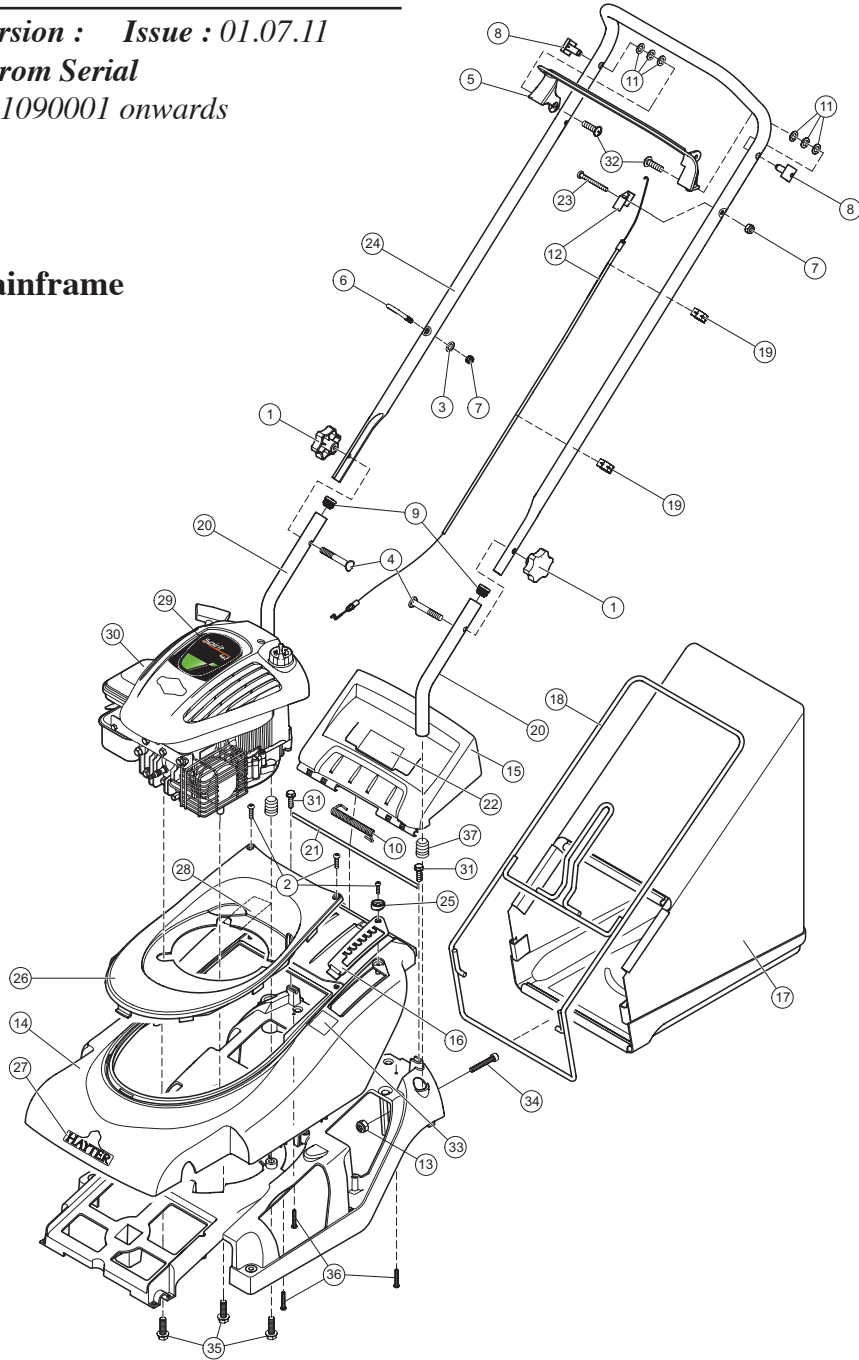
MAKERS OF THE FINEST MOWERS

English Version : Issue : 01.07.11

Codes: From Serial

616E 311090001 onwards

Upper Mainframe



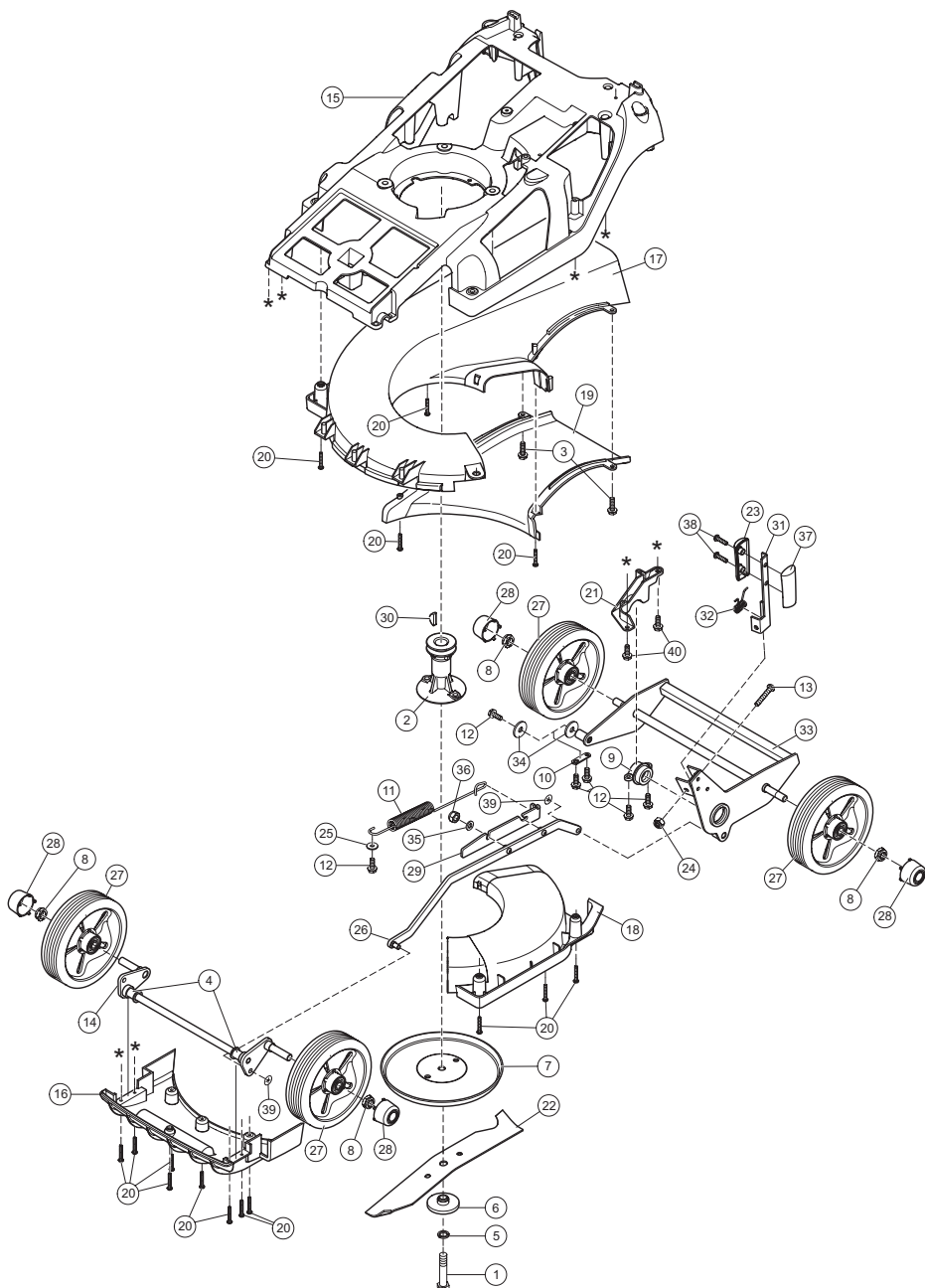
Spirit - Parts List

Code 616E

Upper Mainframe

Item No	Description	Part No.	616	Item Note
1	KNOB M8 HANDLEBAR	480088	2	
2	SCREW M4*16	111-0094	3	
3	WASHER M6 PLAIN	09472	1	
4	BOLT HANDLEBAR	HY226024	2	
5	ENGINE LEVER	111-0102	1	
6	GUIDE ROPE	305093	1	
7	NUT M6 NYLON INSERT T TYPE	09544	2	
8	PIN PIVOT	340182	2	
9	PLUG HANDLEBAR	300160	2	
10	SPRING DEFLECTOR	410030	1	
11	WASHER NYLON 19*11*1.6	09688	6	
12	CABLE ENGINE BRAKE	111-0096	1	
13	NUT M6 NYLOC 'T' TYPE	09438	2	
14	UPPER DECK	111-1054	1	
15	MOULDING REAR DEFLECTION	111-1043	1	
16	PLATE HOC	111-0040	1	
17	GRASS BAG	111-0042	1	
18	GRASS BAG FRAME	111-0045	1	
19	GUIDE CABLE	410037	2	
20	HANDLEBARS LOWER	111-0051	2	
21	BAR HINGE	111-0056	1	
22	DECAL SAFETY	111-0083	1	
23	BOLT M6*40	ZBH1F040U	1	
24	HANDLEBARS	111-0079	1	
25	P CLIP	111-0098	1	
26	MOULDING TRIM PETROL	111-0089	1	
27	DECAL HAYTER ROYAL WARRANT	410087	1	
28	DECAL SERIAL NUMBER	-----	1	
29	DECAL ENGINE	111-3200	1	
30	ENGINE	111-2644	1	
31	TAPTITE M6*20	09575	2	
32	SCREW 6*20 PT PAN FLANGE	09687	2	
33	DECAL HEIGHT OF CUT	320006	1	
34	SCREW M6*35 SOC	111-0118	2	
35	SCREW TAPITE UNC 9.3*30.8	111-0805	3	
36	SCREW PT M4*25	111-0100	3	
37	HANDLEBAR PLUGS	111-0960	2	

Lower Mainframe



Lower Mainframe

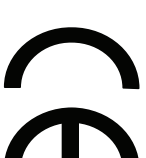
Item No	Description	Part No.	617	Item Note
1	BOLT UNF 3/8 X 3 1/4 HEX HD	09788	1	
2	CARRIER BLADE BOSS-DIE CAST	410078	1	
3	TAPTITE M6*20 SCREW	09575	2	
4	BEARING FRONT AXLE	410069	2	
5	WASHER SPRING	09273	1	
6	DISTANCE PIECE	HY4014	1	
7	FRICTION DISC	410057W	1	
8	NUT M12 NYLOC EXTRA THIN	111-0119	4	
9	HOUSING PIVOT BEARING LH	410048	1	
10	PLATE SECURING	219037	1	
11	SPRING COUNTER BALANCE	410050	1	
12	TAPTITE M6*16 SCREW	09365	7	
13	M8*55 HEX BOLT	09565	1	
14	AXLE FRONT WA	111-0027	1	
15	CAST CHASSIS	111-0031	1	
16	MOULDING FIN	111-0034	1	
17	MOULDING SNAIL DECK	111-0037	1	
18	MOULDING SNAIL DECK ACCESS	111-0038	1	
19	MOULDING THROW PLATE	111-0039	1	
20	SCREW PT M4*25	111-0100	15	
21	MOUNT BEARING	111-0050	1	
22	CUTTER BAR	111-0093	1	
23	HOC KNOB RIGHT	111-0055	1	
24	NUT M8 NYL INSERT T TYPE	09441	1	
25	WASHER PLAIN	09262	1	
26	ROD CONNECTING	111-0063	1	
27	WHEEL	111-2021	4	
28	WHEEL CENTRE CAP	111-0066	4	
29	PLATE SPRING MOUNT	111-0073	1	
30	KEY WOODRUFF	1662	1	
31	HOC LEVER	111-0059	1	
32	SPRING TORSION HOC GALVANISED	111-0078	1	
33	WHEEL FRAME	111-0068	1	
34	WASHER M16 PLAIN	09491	2	
35	WASHER M8 SHAKEPROOF	09476	1	
36	NUT M6 NYLOC 'T' TYPE	09438	1	
37	HOC KNOB LEFT	111-0105	1	
38	SCREW M4	HY100078	2	
39	WASHER STARLOCK	0201086	2	
40	SCREW M6*25 TAPTITE	111-0116	2	

Spirit - EC Declaration Of Conformity

PartNumber:- 111-5146-A

EC DECLARATION OF CONFORMITY

Manufactured for: HAYTER LIMITED,
Address: Spellbrook, Bishop's Stortford, Herts. CM23 4BU. ENGLAND
declare that the lawnmower :



Model name: **Spirit 41
4 Wheel Push**
Type: Pedestrian rotary
Model No: CODE 616E
Cutting width: 41 cm
Speed of rotation of the
cutting device: 2850 rpm
Engine manufacturer: Briggs and Stratton
Speed of rotation of engine: 2850 rpm

Complies with the provisions of Directive: 2006/42/EC Essential Health & Safety Requirements Relating to the Design & Construction of Machinery and Safety Components and the regulations transposed into national law.

Also Directive 2004/108/EEC Electromagnetic Compatibility and the regulations transposed into national law.

Also Directive 2000/14/EC Noise emission in the environment by equipment for use outdoors, as amended and the regulations transposed into national law.

Procedure applied for the conformity assessment: ANNEX VI, procedure 1.

Notified Body: TÜV Industrie Service GMBH - TÜV SÜD Group, Westenstrabe 199, 80686 MÜNCHEN, Germany

Notified body identification No: 0036

Measured sound power level: 96 dB(A)

Guaranteed sound power level: 96 dB(A)

Signed

Date: 26.10.09
Declaration done and technical documentation kept at:
HAYTER LIMITED
Spellbrook, Bishop's Stortford,
Herts. CM23 4BU ENGLAND

S. A. Maryniak
(Technical Director)

VIBRATION INFORMATION

Hand / Arm Vibration Level at the Operator Position measured in accordance with European Standard EN 836:

616
Measured Vibration Level a_{hv} = 11 ms^{-2}
Uncertainty of measurement K = 4 ms^{-2}

SOUND PRESSURE INFORMATION

Sound Pressure Level at the Operator Position measured in accordance with European Standard EN 836:

Measured Sound Pressure Level L_{PA} = 86 dB(A)
Uncertainty of measurement K = 4 dB(A)

Serial No.

Spirit - Parts List
Code 616E